

# VAR PROVENCE CRUISE CLUB

9 BOUTIQUE PORTS IN THE HEART OF PROVENCE & COTE D'AZUR



varprovence-cruise.com

@CruiseVarPce



contact@varprovence-cruise.com



**MEDCRUISE AWARDS** Associate Member  
with the Most Proactive  
Tourist Board/Municipality

**Seatrade Cruise Awards**  
2017  
Marketing Initiative of the Year Finalist

**insight**  
2013 AWARDS  
BEST DESTINATION EXPERIENCE

**Seatrade Insider**  
CRUISE AWARDS 2013  
Port of the Year Finalist

Founding members of the  
Var Provence Cruise Club

By



With



VAR CHAMBER OF COMMERCE AND INDUSTRY

ENJOY VARIETY

# TABLE OF CONTENTS



## The Var Chamber of Commerce and Industry, a dynamic player in the development of the cruise activity in Var Provence

The Var Provence cruise ports network	6
Cruise to a friendly destination	8
Innovative immersive shore excursions	10
Var Provence makes your wish come true	11
Safety in ports	13

## The Var Provence cruise ports

Ports of Toulon Bay	16
Saint-Cyr-sur-Mer	22
Bandol	26
Sanary	30
Le Lavandou	34
Cavalaire	38
Saint-Tropez	42
Fréjus	46
Saint-Raphaël	50





Saint-Raphaël



THE VAR CHAMBER OF  
COMMERCE AND INDUSTRY,  
A **DYNAMIC PLAYER** IN THE  
DEVELOPMENT OF THE CRUISE  
ACTIVITY IN VAR PROVENCE



La Seyne Terminal - Toulon Bay

# THE VAR PROVENCE CRUISE CLUB, **WHAT FOR ?**

To achieve these goals, the VPCC works closely with both **cruise industry professionals** (cruise lines, maritime agents, tour operators, guide associations...), **with national, regional and local stakeholders** (city councils, tourist office representatives, associations), and **shopkeepers/leisure providers**.

As part of the **Var Chamber of Commerce and Industry**, the VPCC has a strong track record in animating and mobilising the entire community, an expertise in business development, and a **perfect knowledge of the Var Provence area**.

An average of

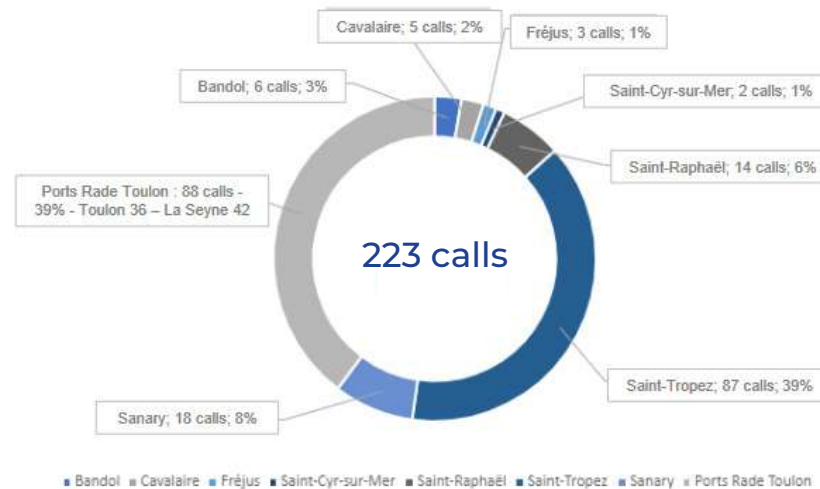
 200 calls yearly

 220 000 passagers

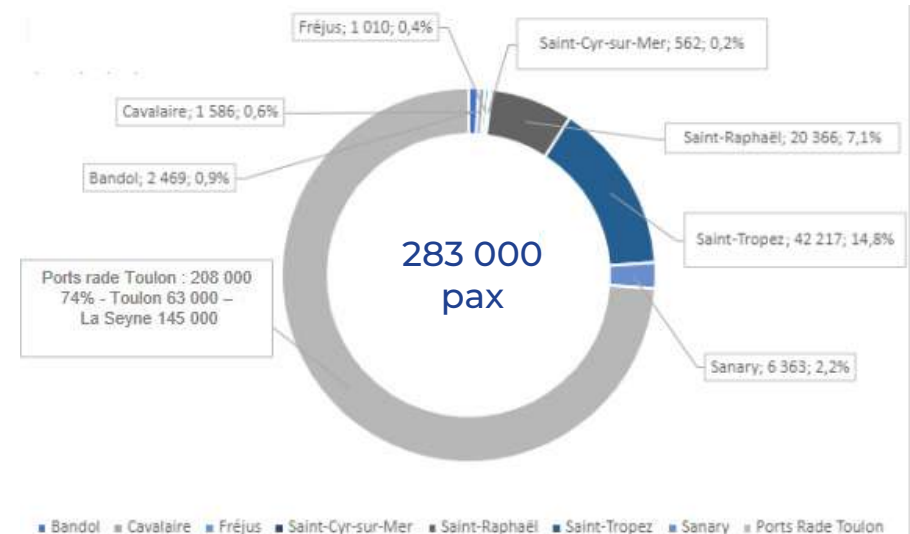
 9 boutique ports

 A catalogue of more than 100 excursions

➔ Our survey results: 96% satisfaction rate  
63% of passenger visiting our ports  
have an intention to return for  
holidays in the next 3 years



Forecasts 2023

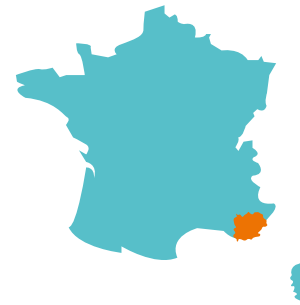




# THE VAR PROVENCE CRUISE PORTS NETWORK

The VAR PROVENCE CRUISE CLUB (VPCC) has been launched in 2008 by the **Var Chamber of Commerce and Industry\*** (Var CCI) and the **Var General Council**, and is currently managed by the Var CCI's team.

The Var Chamber of Commerce and Industry is a public body that helps companies to settle and develop their businesses in the Var Provence area; also, the Var CCI manages the activities of the Ports of Toulon Bay (Cruise, Ferry, Freight, Marina)



## A network of 9 boutique ports:

- 1 commercial port with 4 berths and 2 cruise terminals (Ports of Toulon Bay)
- 8 typical ports at anchor



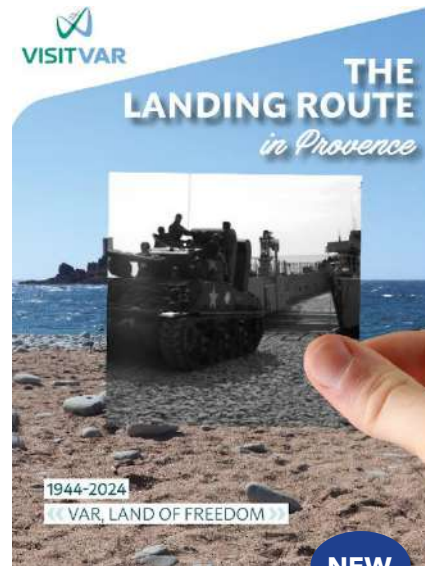


# INNOVATIVE IMMERSIVE SHORE EXCURSIONS

The VPCC has engaged a partnership with tourism authorities to create experiential tailor made excursions catered to cruise passengers; "experience, meet locals, have fun" is VPCC's mission statement.



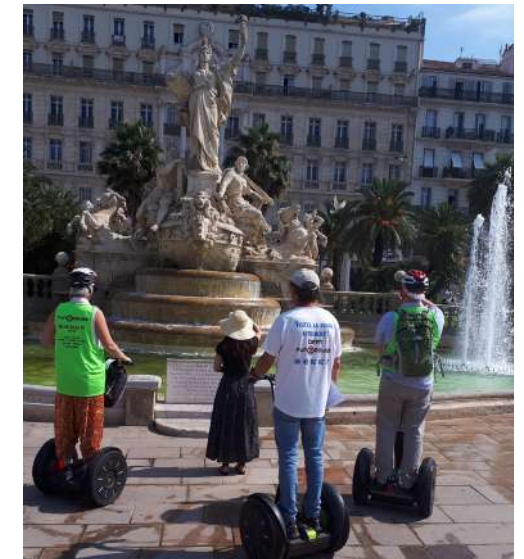
Immerse yourself



NEW



Exclusive shore excursions



A portfolio of more than 100 immersive and sustainable excursions

 [www.varprovence-cruise.com](http://www.varprovence-cruise.com)

 [contact@varprovence-cruise.com](mailto:contact@varprovence-cruise.com)



# VAR PROVENCE, EXCLUSIVE AND PRISTINE

The ports of Var Provence are the ideal gateway to outstanding Provençal sites and immersive activities. In 2019, 1 500 excursions were done from the Ports of Toulon Bay, 155 from Saint-Raphaël and 66 from Sanary-sur-Mer.

## DO YOU KNOW THAT VAR-PROVENCE...

- Is the sunniest area in France?
- Is the most popular tourist destination after Paris?
- Is the second most forested area in France?
- Offers 261 miles of coastline (420 km) and 230 beaches?
- Is the 1st beekeeping area in France?
- Has 6 specialties known as Protected Designation of Origin including 3 types of wine, honey, figs, and olive oil?
- Is the world's Capital of reed, essential for woodwind instruments?
- Hosts the **Grand prix de France Formula 1** in Le Castellet each June

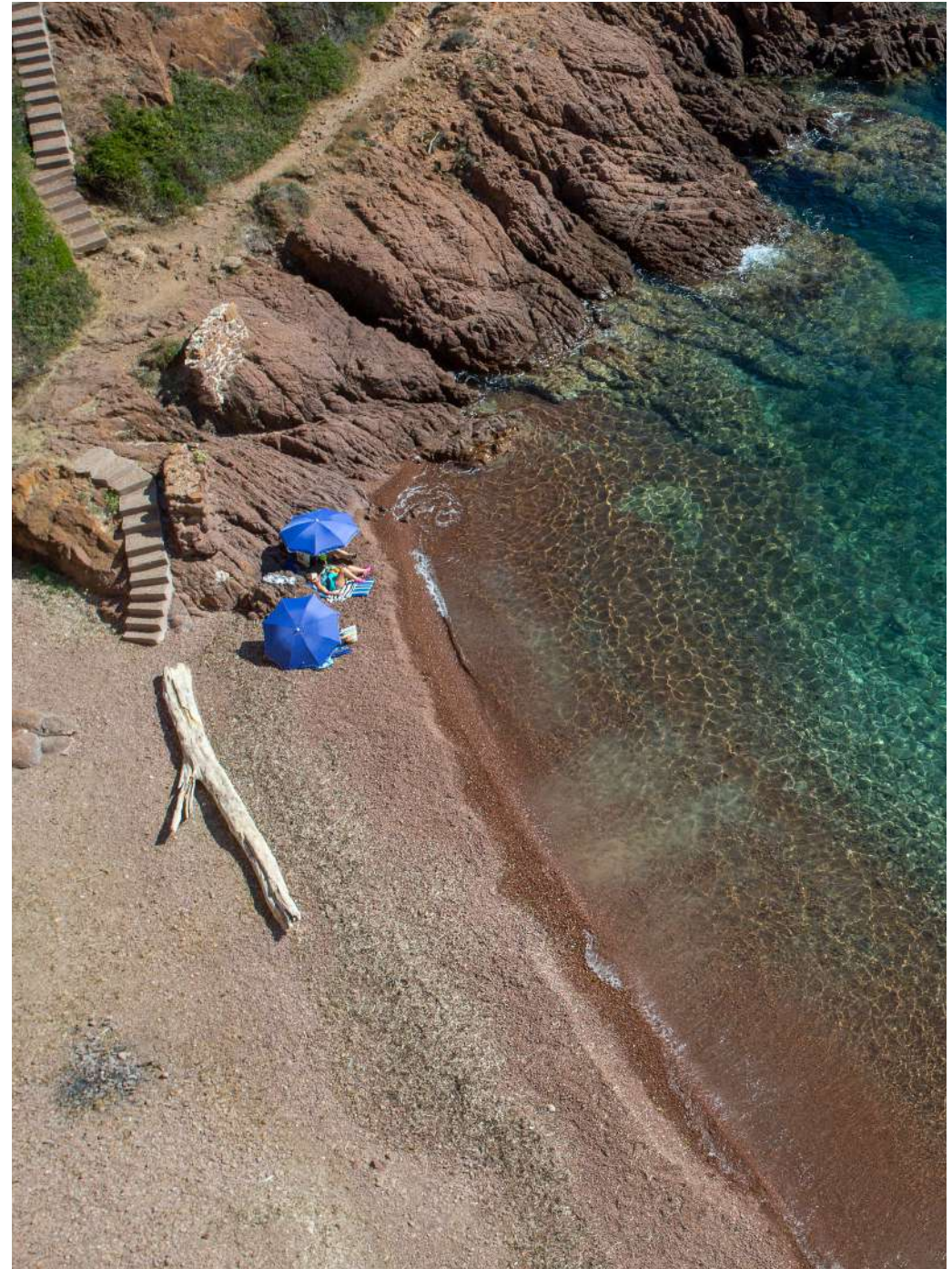
## VAR PROVENCE FIGURES

- 2 breathtaking bays: The Gulf of Saint-Tropez and the Bay of Toulon, which is the largest one in Europe
- 1 "Outstanding Natural Site\*" (out of 41 in France): The Verdon Canyon
- 11 "Extraordinary Gardens\*": 4 at Hyères-les-Palmiers, 2 at La Valette, 1 at Gassin, La Roquebrussanne, Rayol Canadel and Toulon
- 4 "Most beautiful villages" (out of 154 in France): Bargème, Gassin, Seillans and Tourtour

\*These labels have been granted by the Ministry of culture and Ministry of ecological transition

Plan your FAM Trip with  
the VPCC team!

✉ [contact@varprovence-cruise.com](mailto:contact@varprovence-cruise.com)



# SMART SHOPPING TOURISM THANKS TO THE CRUISE FRIENDLY APPROACH!

Launched in 2013 by the Var Provence Cruise Club and deployed at first in the Ports of Toulon Bay (Toulon/La Seyne-sur-Mer), the « **Cruise Friendly** » certification is granted to local tourism providers and storekeepers who comply with certain requirements catered to visiting cruise passengers.

The aim is to create a **strong network** where the VPCC, Tourist Offices and local providers work towards the same common goal: **delivering a welcome that meets the quality and requirements of cruise passengers, crew members and cruise lines.**

## What are the Cruise Friendly's partners commitments?

- To adapt their opening hours aligning them with scheduled cruise calls
- To smile and be friendly
- To offer a special gift or discount
- To speak English or at least basic English sentences
- To accept a Mystery Shopping procedure
- To display the "Cruise Friendly" logo on their shop windows to be easily spotted by the cruise guests
- To deliver to the VPCC the results of a **Cruise Friendly survey** to evaluate the effectiveness of the certification

## What are the Var Provence Cruise Club commitments?

- To promote the **Cruise Friendly shops** via marketing collateral when passengers arrive at the cruise terminals: upon disembarkation, cruise passengers are given a **free Cruise Friendly city map** so they can find participating shops
- They can also download the **Cruise Friendly app** providing an interactive map of the city and GPS indications to locate all Cruise Friendly partners.
- It includes in some cities a **3D virtual visits** of not to be missed tourist and cultural sites thanks to « Archistoire » technology: immersive discovery based on hybrid-reality, that turns any place into a memorable destination for visitors. By exploring the surroundings at 360° cruise passengers can interactively access meaningful information about their visit.
- Also, a free yellow wristband is given so they are easily spotted as "V.I.P" guests
- To provide the partners with a yellow "**Cruise Friendly**" tag to enhance the visibility of their shops
- To give the partners the keys to understand the **cruise customers' needs** and expectations (Practical guide with detailed useful information)
- To share the conclusion of the Mystery Shopping procedure

WARM WELCOME + NEW POTENTIAL CUSTOMERS

=

HAPPY CRUISE GUEST + HAPPY CRUISE LINES 😊

[www.cruise-friendly.com](http://www.cruise-friendly.com)



This app promotes « Smart Tourism Shopping » an increasingly relevant component of the tourism value chain.

It gathers a network of merchants (restaurants, shops, museums, leisure providers...) all mobilised to deliver the best welcome to cruise guests) in 14 destinations worldwide :

Yokohama, Sète, Ile de la Réunion, Ile de la Martinique, Cherbourg (new in 2022 !) and more to come.

In the Var : St-Raphaël, Fréjus, St-Tropez, Cavalaire, Le Lavandou, Hyères, Toulon, La Seyne, Sanary, Bandol are part of the Cruise Friendly network.



# CRUISE FRIENDLY

## A GROWING NETWORK!

Already 9 destinations in Var Provence:

St-Raphaël, St-Tropez, Le Lavandou, Hyères, Toulon, La Seyne, Sanary, Bandol, Le Castellet

Approaching 400 partners!

The Cruise Friendly Label ensures a **warm welcome** for passengers and helps local businesses to **attract new customers**. It's a win-win situation for everyone. This smart shopping tourism certification based on a quality welcome is just unique in the Med!



The Var Provence cruise club team is working to extend this approach on a national and international scale. Already 5 destinations have joined the network and more to come...

The Var Provence Cruise Club was proud to be a finalist for the "Marketing Initiative of the Year" category at the Seatrade Europe Cruise Awards with the Cruise Friendly Welcome Quality Label.

A major port in Asia has requested the VPCC to be advised on the deployment of a quality hospitality label for cruise passengers and is interested in implementing the Cruise Friendly initiative.







# SAFETY IN PORTS



Beyond its beauty, the Bay of Toulon is the most secured bay in Europe thanks to the full ISPS compliance of its ports (Toulon & La Seyne-sur-Mer), and the presence of the French Navy base in the Bay.

## Safety standards

- 60% of the French military fleet (Charles de Gaulle aircraft carrier, submarines...) is strategically located in several sites all around the Bay of Toulon. **Because of those military installations, safety is a constant priority in the ports of Toulon and La Seyne-sur-Mer.**
- The International Ship and Port Facility Security Code (ISPS Code) is a comprehensive set of measures to enhance the safety of ships and port facilities. A ZAR, Restricted Access zone, is implemented in the Ports of Toulon Bay, and ISPS deployed in smaller ports such as Sanary-sur-Mer, Saint-Tropez and Saint-Raphaël.
- During cruise calls, **safety agents or police agents are on duty in most of the Var Provence's port network** (Saint-Raphaël, Fréjus, Saint-Tropez, Cavalaire, Le Lavandou, Toulon, La Seyne-sur-Mer, Sanary, Bandol, Saint-Cyr-sur-Mer) to help regulate shuttle bus traffic.



## Sanary-sur-Mer

A new dedicated L shape pontoon with a restricted area is operational **since April 2019**

A **mooring buoy** is operational **since April 2020** – for ships of maximum 224 meters







Toulon city center terminal - Toulon Bay

# VAR PROVENCE



Sanary





# CRUISE PORTS

1 port with 4 berths: Toulon Bay / 8 typical tender ports: Saint-Cyr-sur-Mer, Bandol, Sanary, Le Lavandou, Cavalaire, Saint-Tropez, Fréjus and Saint-Raphaël.







# PORTS OF TOULON BAY



## Out of the crowds, close to the people...

The Ports of Toulon Bay confirm their ideal position in the French Med ports. Located in the Western Med and nestled at the heart of the most beautiful and best sheltered bay in the French Med, Toulon is known as a safe and quality port to call in the French Med. Also, the port is highly secured thanks to the presence of the French Navy in the Bay.

**But there's more to it:** Toulon is a blessed destination offering a relaxing atmosphere, a direct access to the most beautiful white sandy beaches and natural coasts in the French Med and the authenticity of the Provençal way of life... Chill-Out Heaven in the Med, within minutes of stepping ashore, the guests can relax in the beautiful natural scenery of Toulon Bay for a hassle-free day to unwind away from the crowd and enjoy the Provençal "art de vivre".

Simultaneously, fun, gourmet, sporty, secret, amazing, as a cruise destination, the Ports of Toulon Bay roll out new services catered by passionate professionals, a guarantee of providing guests a VIP service.

With this new "chill out" strategy, the destination answers the cruise lines expectations: to propose to the cruise passengers an immersive experience and a memorable stay, off-the-beaten-track.

In that way, they can enjoy their cruise on a different pace, like on a beach and enjoy the seaside perspective, providing a welcome complementary halt after dense urban and cultural visits on most of their cruise itinerary.

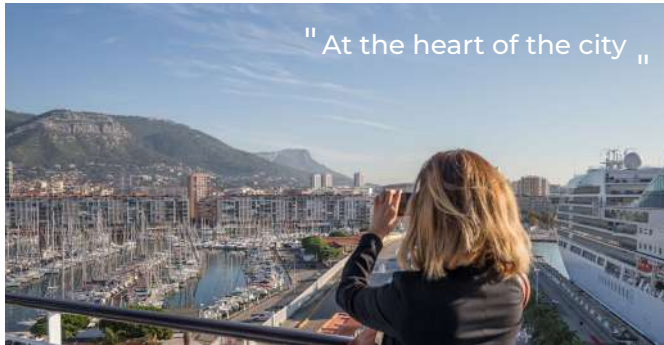


Cable car to reach the Mount Faron and visit the WW2 landing museum



Mourillon beaches





## For further information

**With 2 cruise terminals**, The Ports of Toulon Bay offer excellent facilities able to accommodate the world's largest ships, TOULON DOWNTOWN Terminal, LA SEYNE cruise terminal, alternatives at anchor are available in the Bay.

Always "friendly": Its facilities combined with a high standard reception quality (CRUISE FRIENDLY hospitality label) and unique experience for cruise guests: multilingual reception staff providing tourist information and complimentary souvenirs, local artists and craftsmen inside the terminal... Toulon Bay is highly focused on guest experience, aiming at making of each call a celebration, and each guest an ambassador for the destination.

**The strategic position of The Ports of Toulon Bay as the ideal gateway to both Provence & French Riviera offers a wide range of shore excursions:** in brand name places such as St-Tropez, Aix-en-Provence or in some off-the-beaten track places including other must-see excursions such as Sanary, Le Castellet, Bormes-les-Mimosas, etc.

In total, 88 calls scheduled in 2023, the Ports of Toulon Bay are expecting around 208 000 cruise visitors by the end of the year, including 14 maiden calls!

## Accessibility

✈️ Access to Toulon-Hyères Airport and TGV from the Toulon train station  
Address: Place de l'Europe, 83000 Toulon

### Toulon connected to Charles de Gaulle, international HUB

Regular flights between Toulon & Paris, offering a connection to 60 destinations in more than 40 countries!

📍 <https://toulontourisme.com>  
[www.toulon-hyeres.aeroport.fr](http://www.toulon-hyeres.aeroport.fr)

## 1 bay, 2 terminals





## Beach & nature destination, alternative to « urban ports »



### Chill out...

Enjoy some of the 230 beaches along 420 km of coastline...  
Like Notre Dame beach on Porquerolles Island, voted most beautiful beach in Europe.



### Take a breath...

Enjoy the blessed and preserved nature all around.



### Slow cruising...

Enjoy the green scenery and preserved nature. Var Provence is the 2nd most forested area in France (green scenery... green tours!)



### Relax...

Enjoy the soft sensation of sea foam and warm, fine sand under your feet!

## In short, Toulon Bay is...

**Secure & safe.** Home of the 1<sup>st</sup> Navy base in Europe, located in the most beautiful & best sheltered bay in the French Med

**Profitable.** Revenues VS Costs

**Attractive.** Central location in the Med, at the heart of city, gateway to both PROVENCE & FRENCH RIVIERA (wide range of tours!) + high satisfaction level of 96% (CRUISE FRIENDLY), and 66% of guests are willing to return, either on a cruise or by their own!



## PORTS AND TOURIST INFORMATION

### Ports of Toulon Bay

Visiting address: 663 ave. 1ère Armée Française Rhin Danube - Zone portuaire de Brégaillon - 83500 La Seyne-sur-Mer  
Phone/Fax: 04 94 22 80 80  
E-mail: delphine.beudin@var.cci.fr

### Tourist Information

Visiting address: Office de Tourisme Provence - 12 Place Louis Blanc - 83000 Toulon  
Distance from port: 200 meters  
E-mail: n.gerthoux@toulontourisme.com  
Internet: toulontourisme.com

### General Information

Terminal/Restrooms in pier area: YES  
Shuttle bus: NO from Toulon City center pier, YES from La Seyne Cruise Terminal  
Parking place for buses: YES  
Taxi: YES  
Rental cars: NO  
Public transportation: YES  
Shopping: YES  
Local currency: €  
ATM: NO  
Tax refund: NO  
Public telephones in pier area: NO  
Internet access in pier area: YES  
Mailboxes in pier area: NO  
Distances Toulon-Hyères Airport 30 km  
Distance to city centre: 500 meters  
Nearest hospital: 1 km

### Services / Facilities & Information

Bunkers delivery /method: YES  
Grey water: YES  
Waste handling: YES  
Waste water method: Sewage by truck  
Anchorage\*: Possible for a 3rd ship when all piers are occupied  
Pontoons: No  
Emergency: Channel 9  
Medical emergency: 112  
Tidal movement: NO  
ISPS approved: YES  
Designated quays for cruise ships: YES, 4 piers  
Beam: No limitation  
WiFi: YES  
Max size ship in port: No limitation  
Max number of passengers per day in port: No limitation  
Max number of ships per day in port: 4 + option for 1 at anchor  
Ship's stay min /max: 08h30-18h00 in Toulon City center, no limitation in La Seyne Cruise Terminal  
Environmental limitations /restrictions: None  
Maximum ship length: 300 meters in Toulon City center, 340 meters in La Seyne Cruise Terminal  
Maximum ship draft and depth in sea: Toulon 8.2 - La Seyne 9.0  
Maximum ship aircraft if bridge: no limitation





# TOULON BAY

## Main highlights & Excursion ideas





# TOULON BAY

## Main highlights & Excursion ideas







# SAINT-CYR-SUR-MER

## Introduction to the Calanques beauties

After spending some time sunbathing on the wonderful beaches of Les Lesques nearby the Port, **visitors of the old quarter downtown will discover the famous french sculptor Bartholdi's replica of the Statue of Liberty!** Why not extend this experience by a nice hiking stroll on the coastal footpath running from the Port of La Madrague to the Port d'Alon, to reach breathtaking **picturesque little fjords!** (locally named "calanques")! **The vineyards** surrounding Saint-Cyr sculpt the landscape and wine growers here are always willing to share their passion. Saint-Cyr-sur-Mer is also renowned for its **famous sea front golf course:** "Fregate Golf club" designed by Californian architect Ronald Fream.

## Not to be missed in Saint-Cyr-sur-Mer

- The provençal market every Sunday morning
- Saint François de Sales church
- Tauroentum Roman Museum
- Sebastien's Art Center
- **The Statue of Liberty**
- The vineyard path
- The "Port d'Alon" creek (calanques)
- Relaxing sandy beaches
- The coastal foothpath (from La Madrague port to Bandol)
- Local vineyards & cellars







La Frégate golf club



## PORT AND TOURIST INFORMATION

### Port of Saint-Cyr-sur-Mer

Visiting address: Avenue du Port, 83270 Saint-Cyr-sur-Mer  
Phone/Fax: +33(0) 494 262 198  
E-mail: nport-leslecques@orange.fr

### Tourist Information

Visiting address: Tourist Office, Place de l'appel du 18 Juin,  
83270 Saint-Cyr-sur-Mer  
Distance from port: 100 m  
E-mail: pascale@saintcyrsumer.com  
Internet: www.saintcyrsumer.com

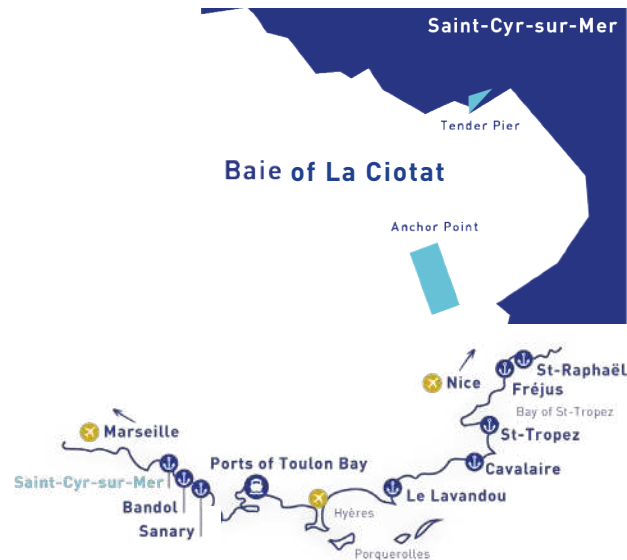
### General Information

Terminal/Restrooms in pier area: YES  
Shuttle bus: NO  
Parking place for buses: YES  
Taxi: YES  
Rental cars: NO  
Public transportation: YES  
Shopping: YES  
Local currency: €  
ATM: YES  
Tax refund: NO  
Public telephones in pier area: NO  
Internet access in pier area: NO  
Mailboxes in pier area: YES  
Distances - airport: 60 km  
Distance to city centre: 2 km  
Nearest hospital: La Ciotat 12km

### Services & Facilities Information

Bunkers delivery /method: NO  
Grey water: NO  
Waste handling: NO  
Waste water method: NO  
Anchorage\*: 43°10'1 N - 005°41'6 E  
Pontoons: 1  
Emergency: Chanel 9  
Medical emergency: Phone 112  
Tidal movement: NO  
ISPS approved: NO  
Designated quays for cruise ships: NO  
Beam: None  
WIFI: NO  
Max size ship in port: No limitation  
Max number of passengers per day in port: No limitation  
Max number of ships per day in port: No limitation

Ship's stay min /max: No limitation  
Environmental limitations /restrictions: None  
Maximum ship length: No limitation  
Maximum ship draft and depth in sea: No limitation  
Maximum ship aircraft if bridge: None



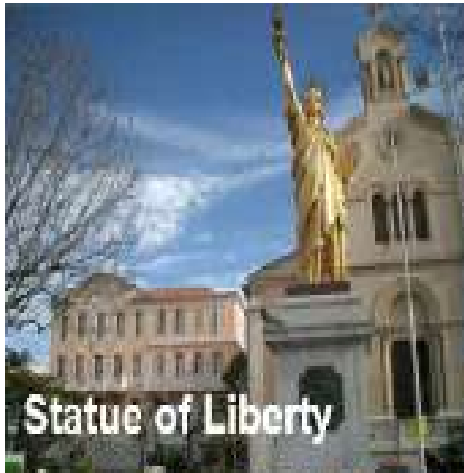
Tender Pier



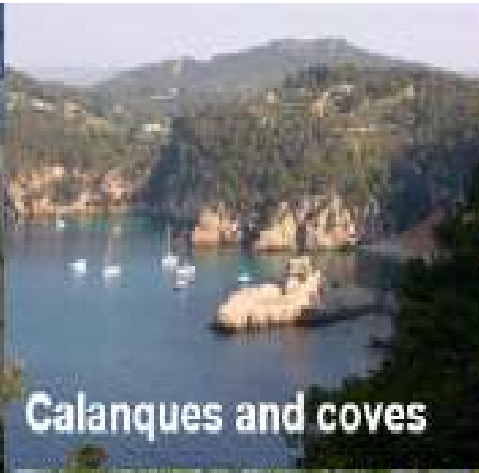
©2019 Terra Metrics

# SAINT-CYR

## Main highlights



Statue of Liberty



Calanques and coves



La Frégate Golf course



Art Gallery



Sunday Market (one of the biggest in Provence)



Fishing port with nice promenade and sandy beach





# SAINT-CYR

## Excursion ideas

### CANDLELIGHT EXPERIENCE TASTING



### WORKSHOP ON SANTON NAIVE CLAY FIGURES



### RETRO CAB



### FANTASTIC COASTAL PATH HIKE



# BANDOL

The bay of Bandol is the natural setting of this 18<sup>th</sup> century Provençal village which has **preserved its authenticity and charm**: the golden light, the Provençal red and yellow colors on the buildings, the sweet and aromatic smells of the south, the sun-drenched local products and the gentle way of life.

The heart of the village is represented by various shops and restaurants facing the port as well as by the great market square where you can find a **food market every morning**.

Are you more of a nature lover? In Bandol, you can explore the beauty of the Mediterranean Coast by boat, stand-up paddle, kayak, during a dive session or on foot by following the coastal path in direction to Saint-Cyr-sur-Mer. Do not forget your smartphone or photo camera: **Breathtaking landscapes are waiting for you!**

Bandol is also internationally renowned for its Provençal wines of protected origin. Located in the heart of the village in front of the Casino, the Bandol Wine Library is presenting 60 vineyards that you can go discover in the region around Bandol.



Provençal market every morning







## PORT AND TOURIST INFORMATION

### Port of Bandol

Visiting address: Quai du Port - 83150 Bandol  
Phone/Fax: +33 4 94 29 42 64  
E-mail: [accueil@portbandol.fr](mailto:accueil@portbandol.fr)

### Tourist Information

Visiting address: Allée Vivien - 83150 Bandol  
Distance from port: 50 meters  
E-mail: [bandoltourisme@bandoltourisme.fr](mailto:bandoltourisme@bandoltourisme.fr)  
Internet: [bandoltourisme.fr](http://bandoltourisme.fr)

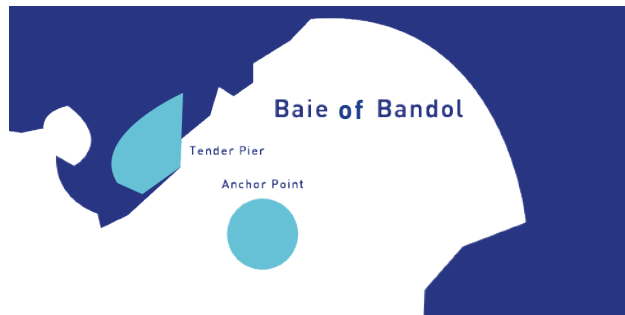
### General Information

Terminal/Restrooms in pier area: YES  
Shuttle bus: NO  
Parking place for buses: YES  
Taxi: YES  
Rental cars: YES  
Public transportation: YES  
Shopping: YES  
Local currency: €  
ATM: YES  
Tax refund: NO  
Public telephones in pier area: NO  
Internet access in pier area: NO  
Mailboxes in pier area: YES  
Distances - airport: 40 km  
Distance to city centre: 30 meters  
Nearest hospital: 20 km

### Port Services / Facilities & Information

Bunkers delivery /method: NO  
Grey water: NO  
Waste handling: NO  
Waste water method: NO  
Anchorage\*: 43°07'70 N - 05°46'4 E  
Pontoon: 1  
Emergency: Channel 9  
Medical emergency: 112  
Tidal movement: NO  
ISPS approved: NO  
Designated quays for cruise ships: None  
Beam: None  
WiFi: at tourist office  
Max size ship in port: NO  
Max number of passengers per day in port: No limitation  
Max number of ships per day in port: 1

Ship's stay min /max: No limitation  
Environmental limitations /restrictions: None  
Maximum ship length: No limitation  
Maximum ship draft and depth in sea: No limitation  
Maximum ship aircraft if bridge: None



Tender Pier





# BANDOL

## Main highlights





# BANDOL

## Excursion ideas

### VISIT OF THE NATIONAL PARK OF THE CALANQUES



### HIKING ON THE COASTAL PATH



### WINE TASTING & LUNCH IN THE VINEYARDS DOMAINE LA BEGUDE



### EXPLORING THE COAST BY KAYAK







# SANARY

## Sanary-sur-Mer is a genuine fishing port and village

Situated in the heart of Provence, it is reputedly one of the French Mediterranean coasts-most typical and authentic fishing port. Its very ancient natural harbour, set in the heart of the town, is permanent home to around 100 heritage vessels dating back as far as 1895, old Provencal fishing boats locally known as "pointu". Sanary has possessed its own fleet of fishermen from time immemorial. Twelve professional fishermen continue to sell their day's catch every day on the port.

Sanary is also known for having provided shelter for famous exiled German artists and writers during the second world war such as Thomas Mann, Stefan Zweig, Franz Hessel and Bertolt Brecht (just to name a few) who resided here between 1933 and 1942. Wander through its pedestrian streets and discover its charms: the mosaic of colors of the buildings bathed in sunshine: the warm welcome of the local population, small, shady, timeless squares with the refreshing sound of water flowing from the fountains and the numerous arts and crafts workshops, design and fashion boutiques. A high quality welcome is dedicated to each cruise passenger with services like tasting of local products.

Each Wednesday, a wonderful provençal market, elected Best Market of France in 2018 and original arts and crafts market every night in summer.







Just Rosé Festival in May



## PORT AND TOURIST INFORMATION

### Port of Sanary

Visiting address: Place de la République - CS 70001 - 83112 Sanary  
 Phone/Fax: 04 94 74 20 95  
 E-mail: preynat@sanarysurmer.com

### Tourist Information

Visiting address: 1 Quai du Levant - CS 70001 - 83112 Sanary  
 Distance from port: 20 meters  
 E-mail: roselyne.martin@sanarysurmer.com  
 Internet: sanary-tourisme.com

### General Information

Terminal/Restrooms in pier area: YES  
 Shuttle bus: NO  
 Parking place for buses: YES  
 Taxi: YES  
 Rental cars: NO  
 Public transportation: YES  
 Shopping: YES  
 Local currency: €  
 ATM: YES  
 Tax refund: NO  
 Public telephones in pier area: NO  
 Internet access in pier area: YES  
 Mailboxes in pier area: YES  
 Distances - airport: 36 km  
 Distance to city centre: 50 meters  
 Nearest hospital: 15 km

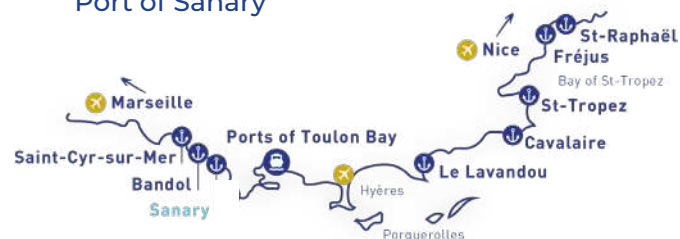
### Port Services / Facilities & Information

Bunkers delivery /method: NO  
 Grey water: NO  
 Waste handling: NO  
 Waste water method: NO  
 Anchorage\*: 43°06'48 N - 005°47'91 E  
 Pontoons: 1  
 Emergency: Channel 9  
 Medical emergency: 112  
 Tidal movement: NO  
 ISPS approved: Certification applied on site  
 Designated quays for cruise ships: Dedicated L shape quay for cruise ships  
 Mooring Buoy: yes (0,5 mile )  
 Latitude : 43,10792667° N  
 Longitude : 5,79806667° E (in WGS84)  
 Beam: None

### WiFi: YES

Max size ship in port: Yes, for ships 224 meters max length  
 Max number of passengers per day in port: No limitation  
 Max number of ships per day in port: 1  
 Ship's stay min /max: No limitation  
 Environmental limitations /restrictions: None  
 Maximum ship length: 224 meters  
 Maximum ship draft and depth in sea: No limitation  
 Maximum ship airdraft if bridge: None

### Port of Sanary



New tender pier,  
 delivered April  
 2019





# SANARY

## Main highlights



Traditional fishing boats « pointus »



Restored frescos of the church



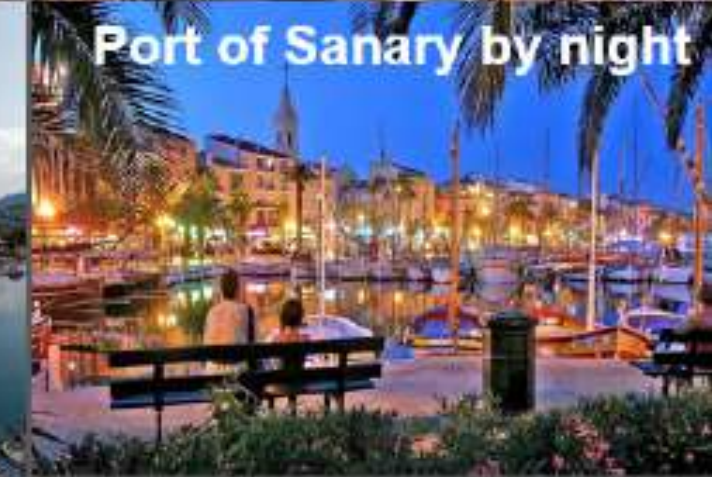
Tower archeology Museum



Market



Port of Sanary



Port of Sanary by night



# SANARY

## Excursion ideas

**"POINTU TOUR WITH A LOCAL &  
PROVENCAL APERITIF ON BOARD"**



**RAY JANE FAMILY VINEYARD  
TASTING AND VISIT OF THE MUSEUM**





©Chris Hagopian, OT Le Lavandou

# LE LAVANDOU

## A former fishing village with 12 beaches

This fishing village features no less than **12 kilometers of coast and 12 sandy beaches all of different colours of sand!** It's **fountain itinerary** (the town is also home to 14 fountains!) is a good way to get to know the resort and appreciate its quality lifestyle and welcome. At the heart of the village, you will **meet with local people and find some local arts & crafts boutiques**. Stopping by the "Place Reyner" square, you will be able to see the local residents playing their favourite game: "**La pétanque**" and drinking a fresh **glass of Rosé!**

Follow the painters footsteps. Have a nice walk alongside the 2km (1.2 miles) "path of the painters" at Le Lavandou. Numerous reproductions of Edmond Cross and Théo Van Rysselberghe's paintings stand along this coastal path. Le Lavandou is indeed the cradle of Neo-Impressionism art movement. Do not miss « Villa Théo »: Theo Van Rysselberghe's museum is worth visiting.

The gateway to Porquerolles Island. Discover this "paradise island", part of a National Park, hiking or cycling. Enjoy the most beautiful beach in Europe "Notre Dame Beach" & visit the new Carmignac Foundation: 2000m<sup>2</sup> of art exhibition & a giant sculpture park featuring major 20th century artists.



Carmignac Museum in Porquerolles Island

➔ <https://www.ot-lelavandou.fr>





## PORT AND TOURIST INFORMATION

### Port of Le Lavandou

Visiting address: Nouveau Port Le Lavandou - 83980 Le Lavandou  
Phone/Fax: 04 94 00 41 10  
E-mail: [vincent.berenguier@le-lavandou.fr](mailto:vincent.berenguier@le-lavandou.fr)

### Tourist Information

Visiting address: Quai Gabriel Péri - 83980 Le Lavandou  
Distance from port: 100 meters  
E-mail: [laleonard@ot-lelavandou.fr](mailto:laleonard@ot-lelavandou.fr)  
Internet: [ot-lelavandou.fr](http://ot-lelavandou.fr)

### General Information

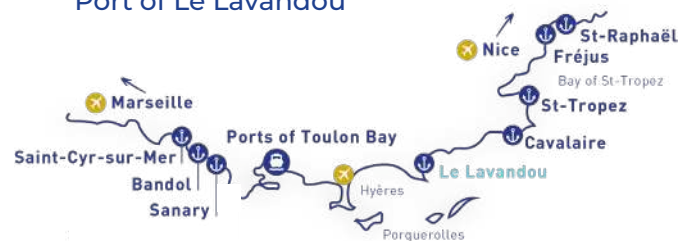
Terminal/Restrooms in pier area: YES  
Shuttle bus: NO  
Parking place for buses: YES  
Taxi: YES  
Rental cars: YES  
Public transportation: YES  
Shopping: YES  
Local currency: €  
ATM: YES  
Tax refund: NO  
Public telephones in pier area: YES  
Internet access in pier area: NO  
Mailboxes in pier area: YES  
Distances - airport: 20 km  
Distance to city centre: 100 meters  
Nearest hospital: 40 km

### Port Services / Facilities & Information

Bunkers delivery /method: NO  
Grey water: NO  
Waste handling: NO  
Waste water method: NO  
Anchorage\*: 43°08'12 N - 06°23'08 E  
Pontoons: 1  
Emergency: Channel 9  
Medical emergency: 112  
Tidal movement: NO  
ISPS approved: NO  
Designated quays for cruise ships: None  
Beam: None  
WiFi: at tourist office  
Max size ship in port: No limitation  
Max number of passengers per day in port: No limitation  
Max number of ships per day in port: 1

Ship's stay min /max: No limitation  
Environmental limitations /restrictions: none  
Maximum ship length: No limitation  
Maximum ship draft and depth in sea: No limitation  
Maximum ship air draft if bridge: None

### Port of Le Lavandou



Tender Pier





# LE LAVANDOU

## Main highlights



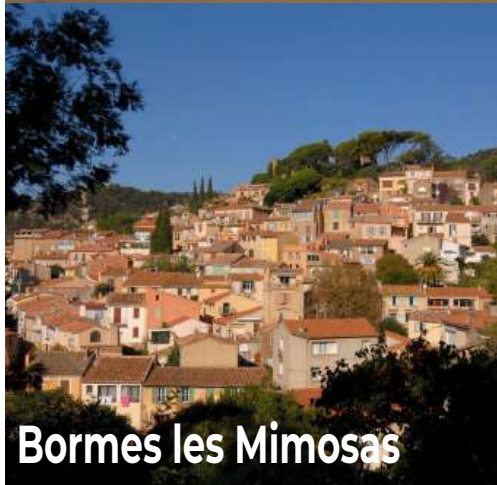
Cavaliere beach



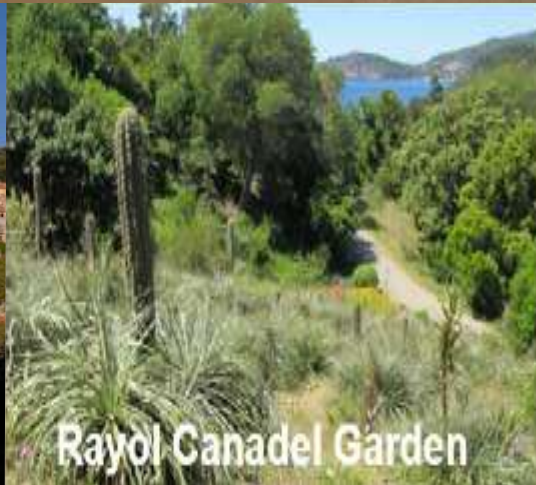
Theo Van Rysselberg  
Museum



Cristal clear water



Bormes les Mimosas



Rayol Canadel Garden



Chartreuse de la Verne Convent





# LE LAVANDOU

## Excursion ideas

**360° PANORAMIC HIKE OVER THE SEA**



**TRANSPARENT' SEA KAYAKING**

**CATAMARAN SAILING HEAVEN**





# CAVALAIRE

## Nautical resort and bay of the WW2 Landing in Provence

Nestled in a magnificent bay of the same name, the town features 4 km of sandy, gently-sloping beaches sheltered by the natural barrier of the Maures hills.

Sand as white as the water is transparent; Cavalaire is exotic and offers a complete change of scenery. Its famous bay attracts sailors and **divers from far and wide**, as well as fishing enthusiasts and **jet-skiers**.

A sea trip leads to the Islands of Porquerolles, Port-Cros or Ile du Levant, where you can discover other enchanting creeks. Cavalaire lives with intensity every day of the year. By night, Cavalaire is a bustling resort with its Casino which attracts many visitors.

Next to the Lavandou, Cavalaire is also a gateway to the island of Porquerolles with daily shuttle boat services. Not be missed: the Carmignac contemporary museum.



One of the 12 shipwrecks of Cavalaire Bay







Carmignac Museum in Porquerolles Island



Cavalaire: jet ski capital



## PORT AND TOURIST INFORMATION

### Port of Cavalaire

Visiting address: Rue du Port - 83240 Cavalaire  
Phone/Fax: 04 94 64 17 81  
E-mail: marc-emmanuel.quirouard-frileuse@cavalaire.fr

### Tourist Information

Visiting address: 50 Rond-Point Saint-Exupéry - 83240 Cavalaire  
Distance from port: 500 meters  
E-mail: 04 94 01 92 10  
Internet: cavalaire-surmer.fr

### General information

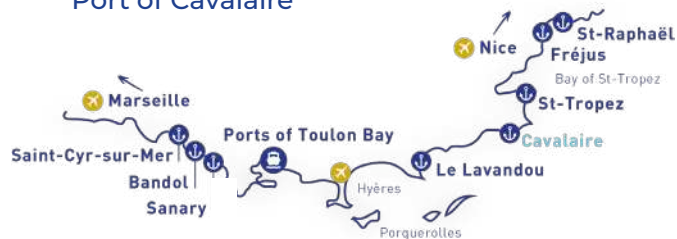
Terminal/Restrooms in pier area: at tourist office  
Shuttle bus: NO  
Parking place for buses: YES  
Taxi: YES  
Rental cars: YES  
Public transportation: YES  
Shopping: YES  
Local currency: €  
ATM: NO  
Tax refund: NO  
Public telephones in pier area: NO  
Internet access in pier area: NO  
Mailboxes in pier area: YES  
Distances - airport: 40 km  
Distance to city centre: 500 meters  
Nearest hospital: 60 km

### Port Services / Facilities & Information

Bunkers delivery /method: NO  
Grey water: NO  
Waste handling: NO  
Waste water method: NO  
Anchorage\*: 43°10'4 N - 006°32'3 E  
Pontoons: 1  
Emergency: Channel 9  
Medical emergency: 112  
Tidal movement: NO  
ISPS approved: NO  
Designated quays for cruise ships: None  
Beam: None  
WiFi: at tourist office  
Max size ship in port: No limitation  
Max number of passengers per day in port: No limitation  
Max number of ships per day in port: 1

Ship's stay min /max: No limitation  
Environmental limitations /restrictions: None  
Maximum ship length: No limitation  
Maximum ship draft and depth in sea: No limitation  
Maximum ship aircraft if bridge: None

### Port of Cavalaire



Tender Pier





# CAVALAIRE

## Main highlights



Fish Restaurant « Chez Joe »



High end beach  
Restaurants - Privatization



Fantastic bay



Amazing ship wrecks to  
discover



Rayol Canadel  
Mediterranean Gardens



# CAVALAIRE

## Excursion ideas

**GUIDED TOURS OF THE FONCIN ESTATE, PARTICULARLY NOTED FOR ITS WHITE BASTIDE, LOCATED AT THE TOP OF A HILL AND OVERLOOKING THE SEA. THIS EXCEPTIONAL SITE HAS A ROLE OF EDUCATIONAL SUPPORT AND PROTECTION OF THE MEDITERRANEAN NATURE.**



### **BEACH PRIVATISATION**





# SAINT-TROPEZ

Saint-Tropez is what dreams are made of and the town remains a favorite spot for celebrities as well as lovers of the seaside, history art and heritage. To discover the village, meander along the tiny alleys of the old town and the world famous harbour.

Saint-Tropez also has a **great historical and cultural heritage**, with the **Annonciade Museum**, featuring a rich collection of paintings from the beginning of the 20th Century, from which most part of it is dedicated to Pointillist, Fauvist and Nabist periods: Signac, Matisse, de Vlaminck, Van Dongen, Derain... **The 17th Century Citadel and its Museum of Maritime history**, the House of Butterflies are historical and cultural highlights of Saint Tropez, and the **recently opened museum of Gendarmerie and Cinema** of Saint-Tropez are welcome additions to our cinematic heritage and host a variety of interactive displays and exhibits.

With its naturally protected environment, the Saint-Tropez Peninsula will delight walkers with its beautiful coastal path, its hilltop villages and magnificent vineyards.

Saint-Tropez is also a **true laboratory for fashion trends**. Since more than fifty years, the village is considered to be the **international capital for summer fashion**. Rondini, Kiwi, K Jacques... Saint-Tropez designers that have made their mark worldwide. **Brigitte Bardot** alone embodies the symbol of the Tropezian ladies' fashion, made of lightness and femininity as portrayed by the Vichy print, the corsair trousers, the short skirt, the tropezian sandals... As from the 21st century, **the main luxury fashion companies** have established themselves, one after the other, in this luxury hot spot of the French Riviera: Dior, Vuitton, Chanel, Hermes, Gucci, Dolce & Gabbana...

Come and discover Saint-Tropez. You'll find a true provençal village whose history and heritage are deeply linked to the sea, and uncover all those mythical places which have made it famous.



➤ <https://www.sainttropeztourisme.com/fr/>





## PORT AND TOURIST INFORMATION

### Port of Saint-Tropez

Visiting address: Quai de l'EPI - 83991 Saint-Tropez  
Phone/Fax: 04 94 97 88 45  
E-mail: jftourret@ville-sainttropez.fr

### Tourist Information

Saint-Tropez Tourisme  
19 Place Carnot Lieudit Place des Lices  
CS 01008, 83990 Saint-Tropez  
E-mail: vdb@sainttropeztourisme.com  
Internet: sainttropeztourisme.com

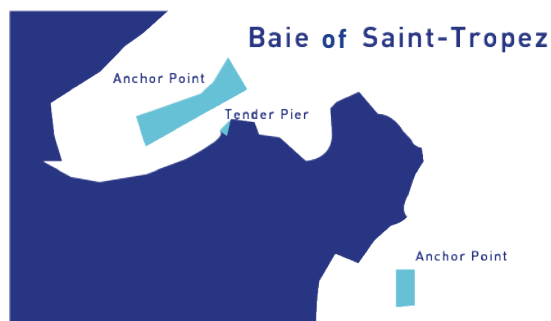
### General Information

Terminal/Restrooms in pier area: YES  
Shuttle bus: NO  
Parking place for buses: YES  
Taxi: YES  
Rental cars: YES  
Public transportation: YES  
Shopping: YES  
Local currency: €  
ATM: YES  
Tax refund: YES  
Public telephones in pier area: YES  
Internet access in pier area: NO  
Mailboxes in pier area: YES  
Distances - airport: Nice: 100 km  
Toulon-Hyères: 44 km  
Distance to city centre: 500 m  
Nearest hospital: 15 km

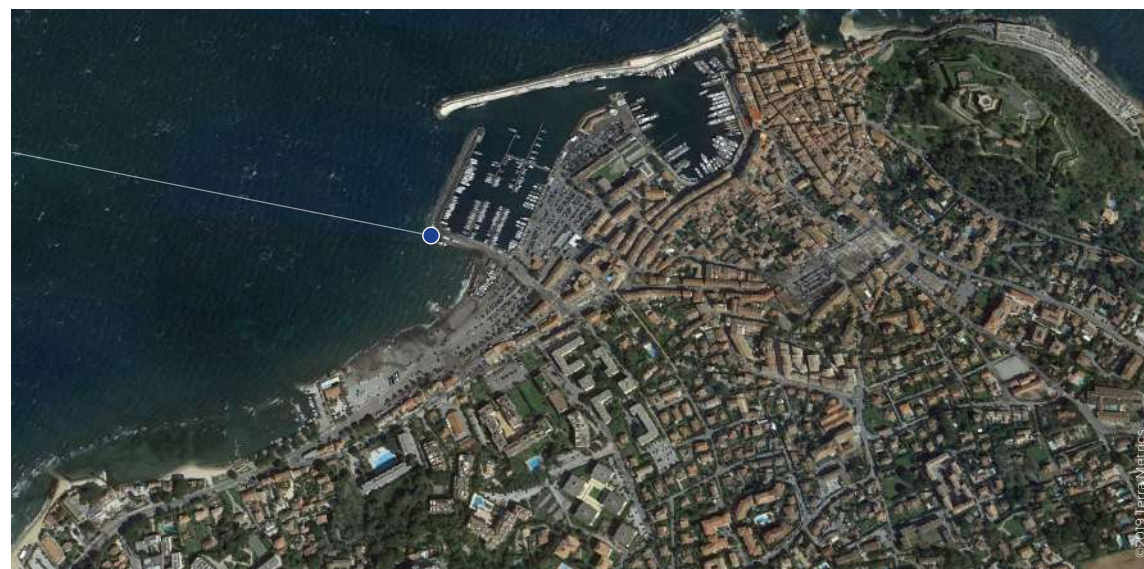
### Port Services / Facilities & Information

Bunkers delivery /method: NO  
Grey water: NO  
Waste handling: NO  
Waste water method: NO  
Anchorage\*: 43°16'3 N - 006°32'8 OE  
Pontoons: 2  
Emergency: Channel 9  
Medical emergency: 112  
Tidal movement: NO  
ISPS approved: YES  
Designated quays for cruise ships: None  
Beam: None  
WiFi: NO  
Max size ship in port: No limitation  
Max number of passengers per day in port: No limitation  
Max number of ships per day in port: 5  
Ship's stay min /max: No limitation

Environmental limitations/restrictions: None  
Maximum ship length: No limitation  
Maximum ship draft and depth in sea: No limitation  
Maximum ship aircraft if bridge: None



Tender Pier





# SAINT-TROPEZ

## Main highlights





# SAINT-TROPEZ



**FIRST EUROPEAN VEGGIE DESTINATION!**  
**A veggie menu in each restaurant**

## THE GENDARMERIE & CINEMA MUSEUM



## THE WORLD CHAMPION PIZZA RESTAURANT NANO TRATTORIA

A few steps from the City Hall, this Italian restaurant welcomes you on its large landscaped terrace or in the rotunda with a view on the bay.

The pizzas are concocted by the French and World Champions 2019 (Parma), Frederic Desmurs and Jeremy Viale...

All the dishes and cooked products are concocted on the spot and all products come directly from Italy.

The owners of the Nano spent 20 years in operational and culinary management at the prestigious Georges Blanc: 3 stars in the Michelin guide.







# FRÉJUS

## The French Pompeii

Fréjus, located in Provence in the Var department, was the very first naval base in the Mediterranean in the days of the Ancient Romans, as **a major port during the Roman Empire** and a bishopric since the end of the Roman period.

**Fréjus shares 2000 years of history with visitors** as they can explore the infinite diversity of the town's main historical buildings, a reminder of each of the periods of its history.

Fréjus, a town area of artistic, and historical interest. Traces of ancient Roman and Medieval times create a prestigious setting that includes a **Roman Arena, an aqueduct, a Roman theatre, an archeological museum...** In Fréjus, art and tradition live side by side in harmony.

From pavement cafes to the **friendly Provençal market**, from the warm ambiance of the rooms in the Local History Museum, there's a whole introduction to the Provençal lifestyle! Equipped for families, with sporty beaches blessed by the sun, gentle wind and sea breeze that will seduce everybody. **Discover the Arts & Craft tour of the historic old town:** where people and art meet. Artist's Studios welcome visitors.

This prosperous town, steeped in emotion and history, is now a centre for Art and culture, at the heart of the Riviera, an ideal holiday destination with plenty of things to see and do without ever losing that sense of subtlety.







## PORT AND TOURIST INFORMATION

### Port of Fréjus

Visiting address: 55 passage des Caryatides, CS80084 - 83606 Fréjus  
Phone/Fax: 04 94 82 63 00  
E-mail: directeur@portfrejus.fr

### Tourist Information

Visiting address: Le Flours 2 - 249 rue Jean Jaurès CS 50123 - 83606 Fréjus  
Distance from port: 2 km  
E-mail: nathalie.courreges.tourisme@frejus.fr  
Internet: frejus.fr

### General Information

Terminal/Restrooms in pier area: YES  
Shuttle bus: YES  
Parking place for buses: YES  
Taxi: YES  
Rental cars: YES  
Public transportation: YES  
Shopping: YES  
Local currency: €  
ATM: In city center  
Tax refund: NO  
Public telephones in pier area: NO  
Internet access in pier area: NO  
Mailboxes in pier area: YES  
Distances - airport: 50 km  
Distance to city centre: 2 km  
Nearest hospital: 5 km

### Port Services / Facilities & Information

Bunkers delivery /method: NO  
Grey water: NO  
Waste handling: NO  
Waste water method: NO  
Anchorage\*: 43°24'70 N - 006°45'30 E  
Pontoons: 1  
Emergency: Channel 9  
Medical emergency: 112  
Tidal movement: NO  
ISPS approved: NO  
Designated quays for cruise ships: None  
Beam: None  
WiFi: at the tourist office  
Max size ship in port: No limitation  
Max number of passengers per day in port: No limitation  
Max number of ships per day in port: 1

Ship's stay min /max: No limitation  
Environmental limitations /restrictions: None  
Maximum ship length: No limitation  
Maximum ship draft and depth in sea: No limitation  
Maximum ship aircraft if bridge: None

### Port of Fréjus



Tender  
Pier





# FREJUS

## Main Highlights





# FREJUS

## Excursion ideas

**ROQUEBRUNE-SUR-ARGENS**  
**SWEET TOOTH CRAVING CHOCOLATE TOUR**  
**& KAYAKING ECOTOUR ON THE ARGENS RIVER**



**TOURRETTES HILLTOP VILLAGE**  
**THE OPEN AIR MUSEUM**



**IMMERSIVE TOUR**  
**IN THE FOOTSTEPS OF ROMAN LEGIONARIES**







# SAINT-RAPHAËL

Located at 65 kms from Nice, and half-way between Cannes and Saint-Tropez (38 kms), Saint-Raphaël is a delightful Mediterranean sea resort set at the foot of the magnificent Esterel Hills. Saint-Raphaël offers a vast and rich natural and cultural heritage, as well as year-round **leisure sporting activities** (water sports, nature activities, 4 international golf courses) and an exciting events calendar.

The town's highly prestigious history is still reflected witnessed by its many magnificent **residences dating back to the late 19th - early 20th centuries**, delightful old streets, marinas, and beautiful seafront promenade. Visitors can also enjoy **attractive shops**, visit the Louis de Funès museum, the **archaeological museum**, or take a stroll around the well-preserved **old quarter and Provencal markets**.

**Seaside:** 36 kilometers of indented coast alternate marinas, 30 fine sand beaches and of pebbles (beach of Boulouris, Dramont and Agay).

**Countryside:** The massif of Estérel, volcanic massif of 32 000 hectares among which 14 000 are classified, offers to hikers a Mediterranean, nice-smelling and protected vegetation. The natural harbour of Agay establishes the natural front door of the Massif.







## PORT AND TOURIST INFORMATION

### Port of Saint-Raphaël

Visiting address: Quai Amiral Nomi - 83700 Saint-Raphaël  
Phone/Fax: 04 94 95 11 19  
E-mail: m.bertora@ville-saintraphael.fr

### Tourist Information

Visiting address: Boul. de la Libération - 83700 Saint-Raphaël  
Distance from port: 50 meters  
E-mail: s.legendre@saint-raphael.com  
Internet: saint-raphael.com  
@saintraphael\_tourism

### General Information

Terminal/Restrooms in pier area: YES  
Shuttle bus: NO  
Parking place for buses: YES  
Taxi: YES  
Rental cars: YES  
Public transportation: YES  
Shopping: YES  
Local currency: €  
ATM: YES  
Tax refund: NO  
Public telephones in pier area: NO  
Internet access in pier area: at tourist office  
Mailboxes in pier area: YES  
Distances - airport: 50 km  
Distance to city centre: 50 meters  
Nearest hospital: 5 km

### Port Services / Facilities & Information

Bunkers delivery /method: NO  
Grey water: NO  
Waste handling: NO  
Waste water method: NO  
Anchorage\*: 43°24'87 N - 006°45'95 E  
Pontoons: 1  
Emergency: Channel 9  
Medical emergency: 112  
Tidal movement: NO  
ISPS approved: YES  
Designated quays for cruise ships: None  
Beam: None  
WiFi: at the tourist office  
Max size ship in port: No limitation  
Max number of passengers per day in port: No limitation  
Max number of ships per day in port: 1

Ship's stay min /max: No limitation  
Environmental limitations /restrictions: None  
Maximum ship length: No limitation  
Maximum ship draft and depth in sea: No limitation  
Maximum ship air draft if bridge: None

### Port of Saint-Raphaël



Tender Pier





# SAINT-RAPHAËL

## Main Highlights



Basilica



Beach waterfront



16th century Chapel



Shopping destination



Luxurious mansions



Historical city center



Marina VIP Restaurant



# SAINT-RAPHAËL

## Excursion ideas

**NO SMOKE ECOTOUR ALONG THE MEDITERRANEAN COAST  
THROUGH THE ROADS OF THE GOLDEN LEDGE AND THE  
ESTEREL**



**LOUIS DE FUNES NEW MUSEUM**





# VAR PROVENCE CRUISE CLUB



By



With

